

Current Flow Diagram Type 928 S USA

Model 83

PART I	POWER SUPPLY, STARTER IGNITION FUEL PUMP
PART II	FUEL INJECTION SYSTEM
PART III	IGNITION/STARTER SWITCH, LIGHT SWITCH HEADLIGHT
PART IV	HEADLIGHT, PARKING LIGHT FOG LIGHT, LICENSE PLATE LIGHT FRONT TURN SIGNAL HAZARD FLASHER
PART V	REAR LIGHTS, LAMP CONTROL UNIT WINDSHIELD WIPER
PART VI	WASHER PUMPS REAR WINDOW WIPER REAR WINDOW DEFOGGER INTERIOR LIGHT CENTRAL LOCKING SYSTEM
PART VII	DOOR LIGHT SEAT BELT OUTSIDE MIRROR POWER WINDOWS BRAKE PADS
PART VIII	AUTOMATIC AIR CONDITIONER
PART IX	AUTOMATIC AIR CONDITIONER SENDER UNITS
PART X	CENTRAL WARNING UNIT, INSTRUMENT CLUSTER
PART XI	CLOCK CIGARETTE LIGHTER TEMPSTAT (CRUISE CONTROL) HORNS

Current Flow Diagram

Type 928 S USA Model 83

WIRE CONNECTORS

T1 - ONE-POLE

- A - NEAR TURN SIGNAL LEFT
- B - NEAR TURN SIGNAL RIGHT
- C - NEAR AC-COMPRESSOR
- F - NEAR FRESH AIR BLOWER
- G - NEAR GLOVE COMPARTMENT
- H - NEAR FUSE/RELAY BOARD
- I - IN TUNNEL
- K - NEAR FUEL PUMP

T2 - TWO-POLE

- A - BEHIND ACCELERATOR PEDAL
- C - BEHIND REAR BUMPER
- D - NEAR LEFT BACKWHEEL
- E - NEAR RIGHT BACKWHEEL
- F - NEAR RIGHT FRONT WHEEL
- G - NEAR LEFT FRONT WHEEL
- H - NEAR DRIVER SEAT
- I - NEAR PASSENGER SEAT
- K - NEAR DRIVER SEAT
- Q - NEAR LEFT FOG LIGHT
- R - NEAR RIGHT FOG LIGHT
- U - NEAR LEFT SIDE MARKER
- V - NEAR RIGHT SIDE MARKER
- W - NEAR FUSE/RELAY BOARD

T4 - FOUR-POLE

- A - IN SPARE WHEEL WELL
- B - IN CONSOLE, RIGHT
- C - IN CONSOLE RIGHT
- D - IN CONSOLE
- E - IN CONSOLE
- F - IN CONSOLE
- G - NEAR RIGHT FRONT WHEEL
- H - NEAR LEFT FRONT WHEEL

T6 - SIX-POLE

- A - BEHIND SIDE COVERING, RIGHT
- B - IN REAR LID, RIGHT
- C - IN SPARE WHEEL WELL
- D - IN CONSOLE

T7 - SEVEN-POLE

- A - BEHIND LUGGAGE COMPARTMENT COVERING LEFT
- B - BEHIND LUGGAGE COMPARTMENT COVERING RIGHT

T14 - FOURTEEN-POLE

IN ENGINE COMPARTMENT, RIGHT

T18 - EIGHTEEN-POLE

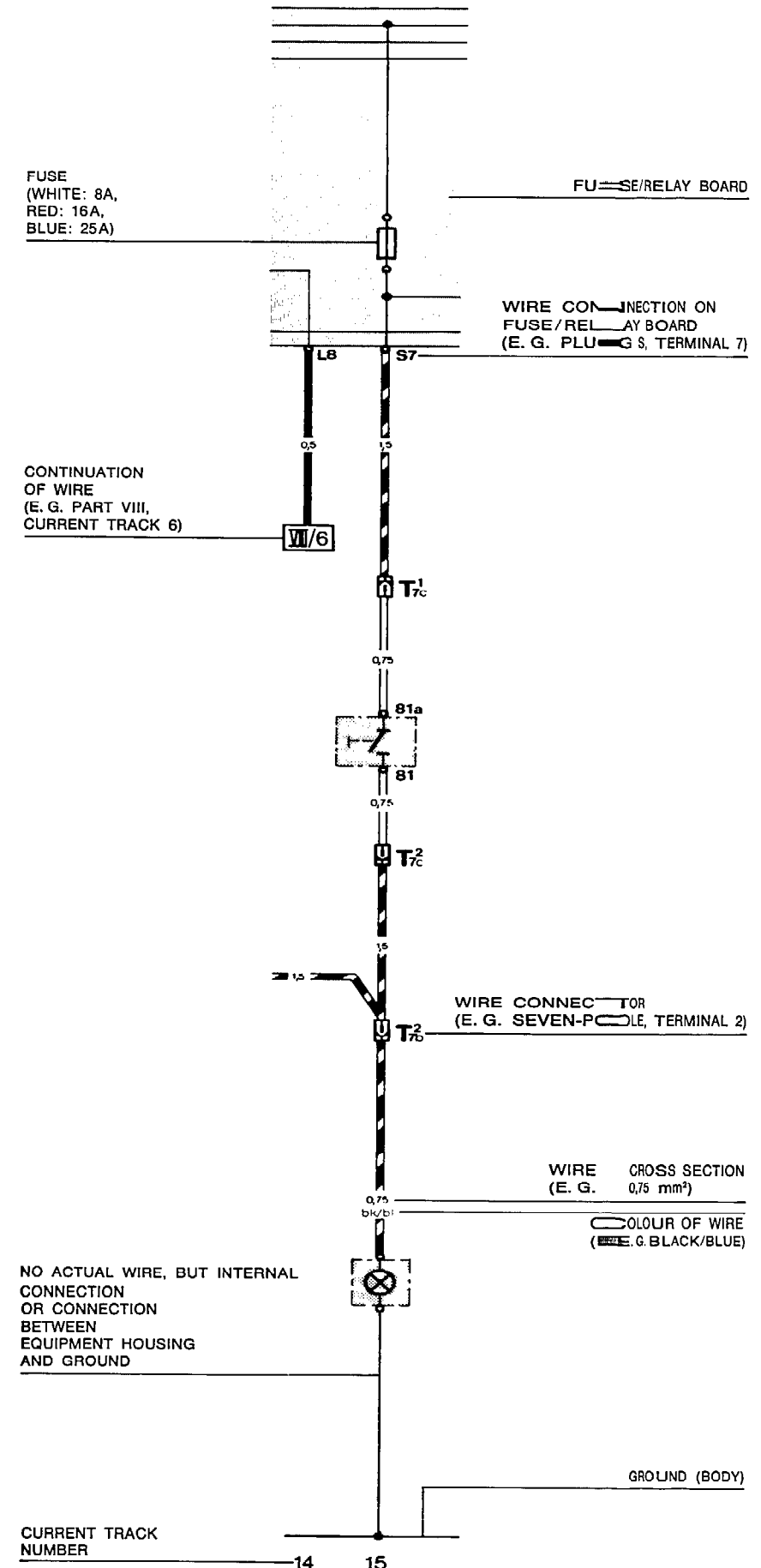
- A - IN FOOT WELL, DRIVER SIDE
- B - IN FOOT WELL, PASSENGER SIDE

GROUND TERMINALS

- ① ON FRONT LOCK MEMBER, RIGHT
- ② AT REAR OF WHEEL ARCH UNDERNEATH RIGHT REAR TRIM PANEL
- ③ ON STEERING CONSOLE
- ④ ON FRONT LOCK MEMBER, LEFT
- ⑤ ON UPPER MOUNTING FOR FUSE/RELAY BOARD
- ⑥ ON FRONT WALL

WIRE COLOURS

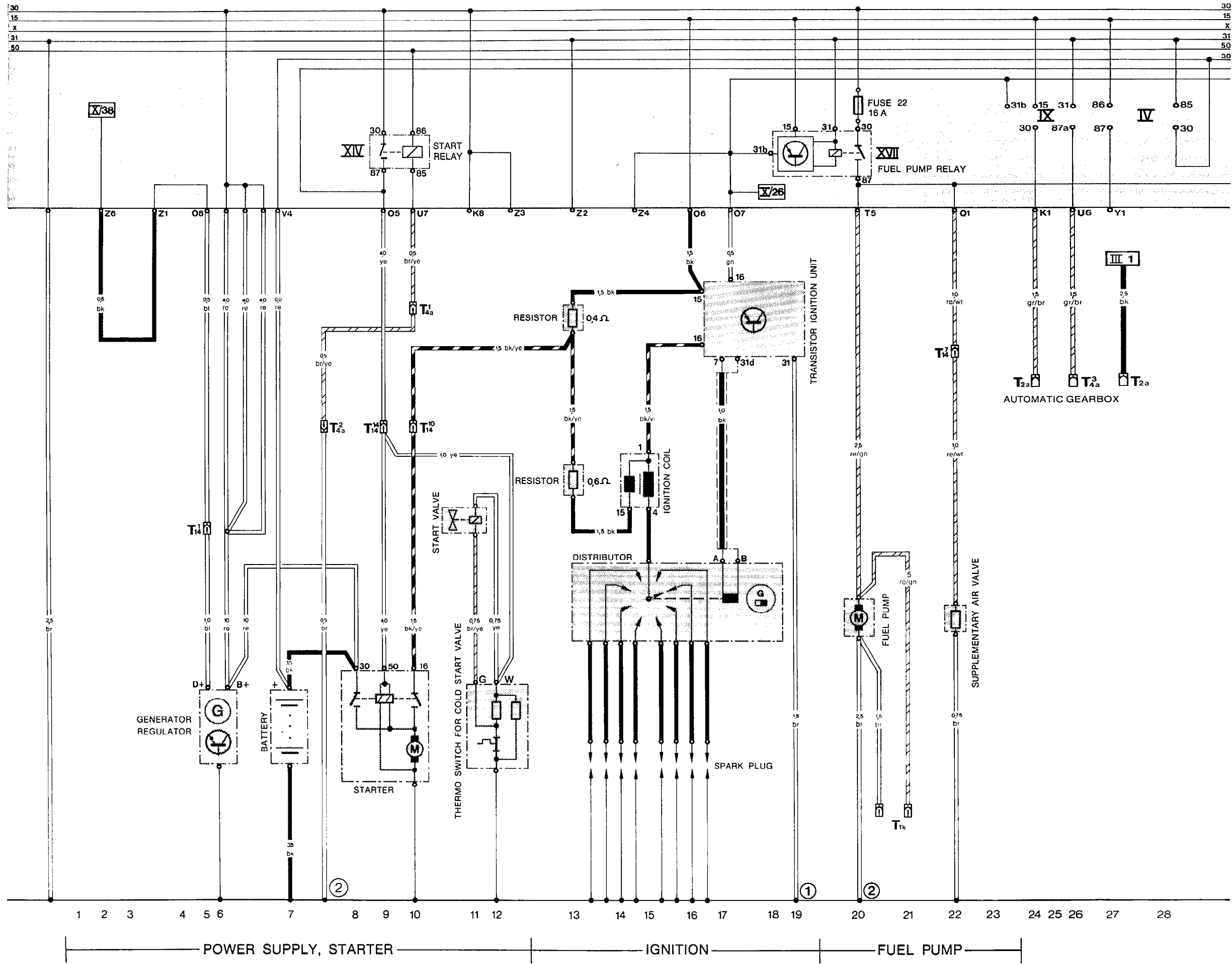
- | | | |
|------------|-------------|-------------|
| BK - BLACK | GN - GREEN | BR - BROWN |
| WT - WHITE | YE - YELLOW | BL - BLUE |
| RE - RED | GR - GREY | VI - VIOLET |



Current Flow Diagram Type 928 S USA Model 83 Part I

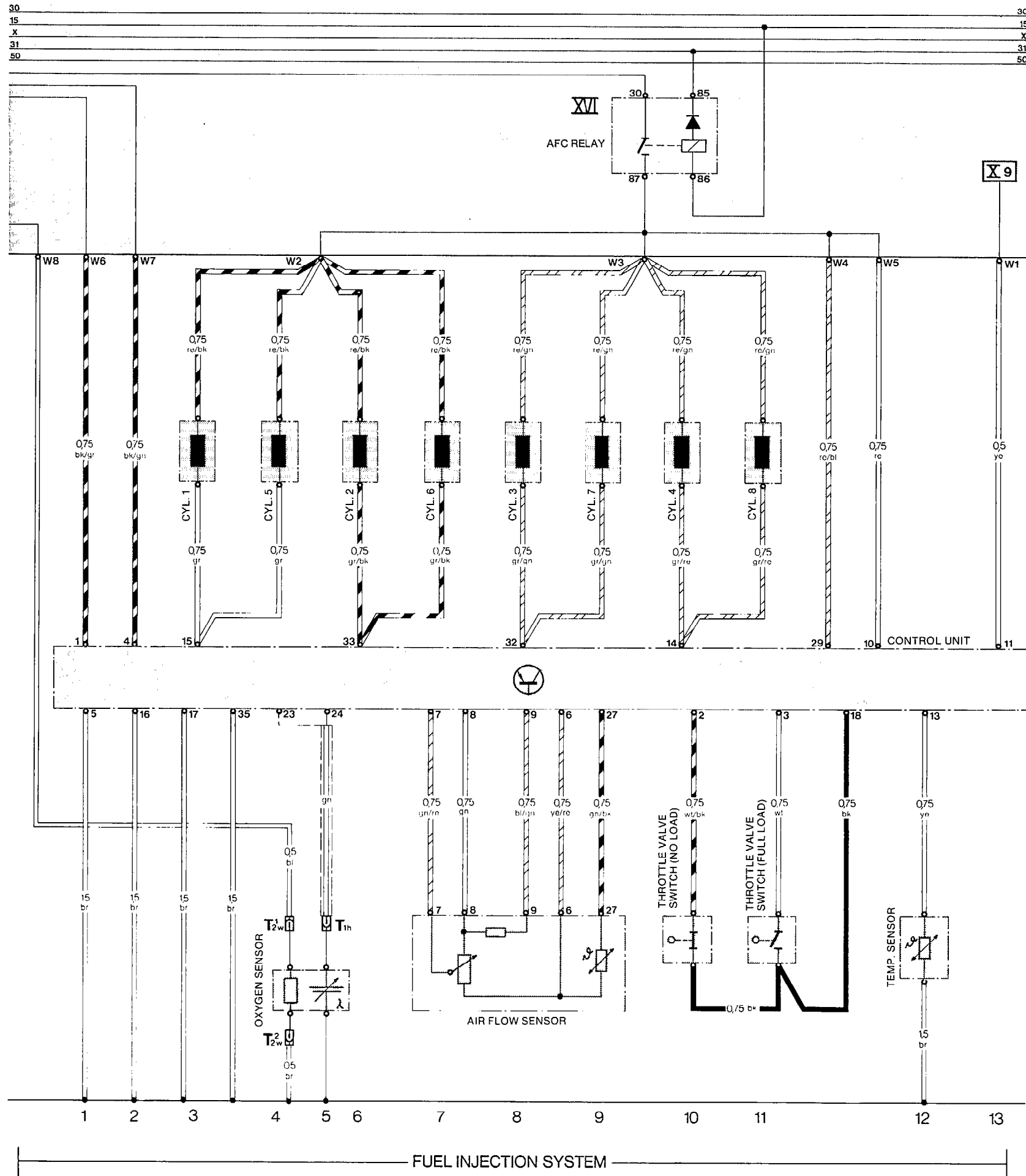
POWER SUPPLY, STARTER
IGNITION
FUEL PUMP

Current Flow Diagram Type 928 S USA Model 83 Part I



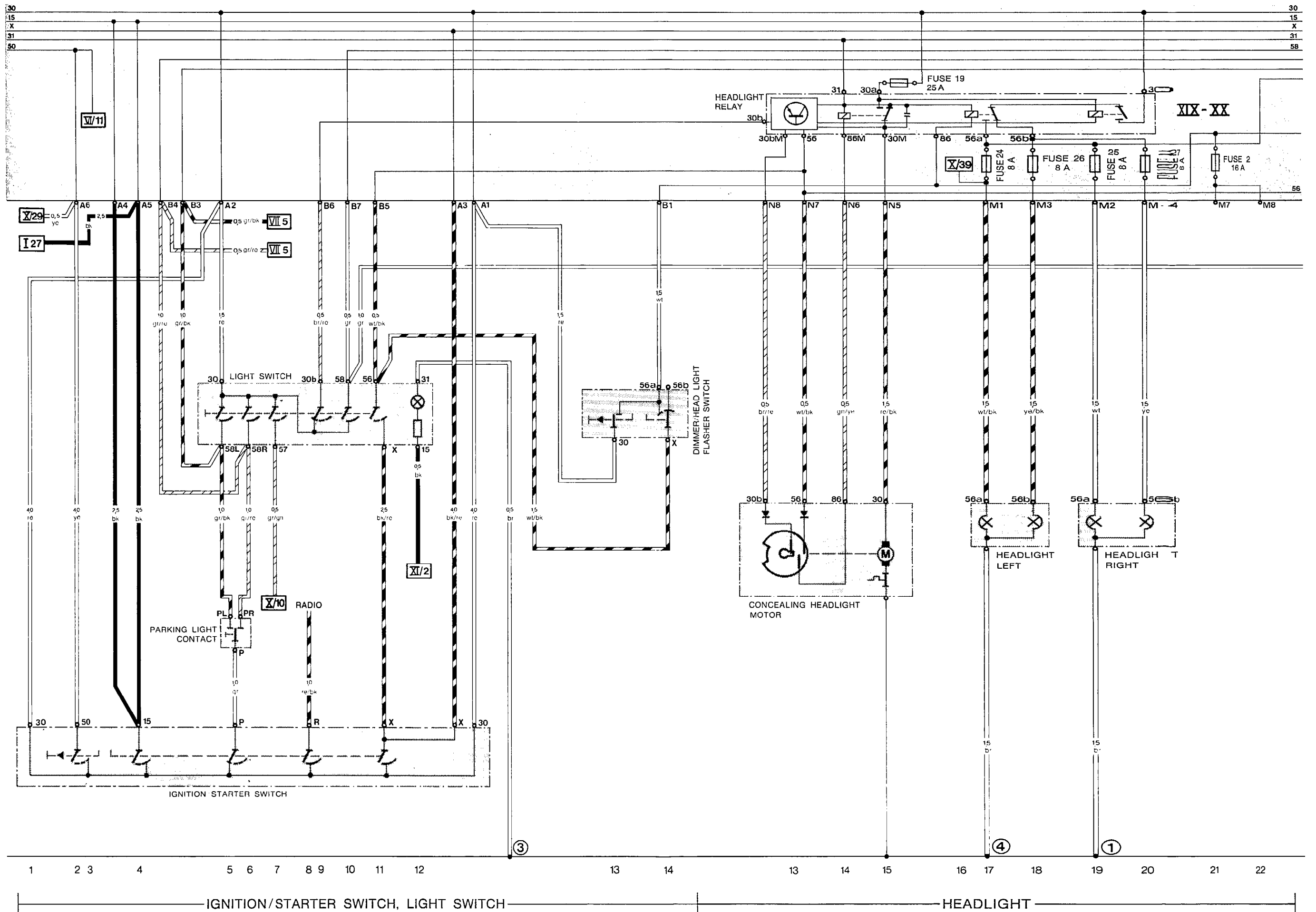
Current Flow Diagram Type 928 S USA Model 83 Part II

FUEL INJECTION SYSTEM



Current Flow Diagram Type 928 S USA Model 83 Part III

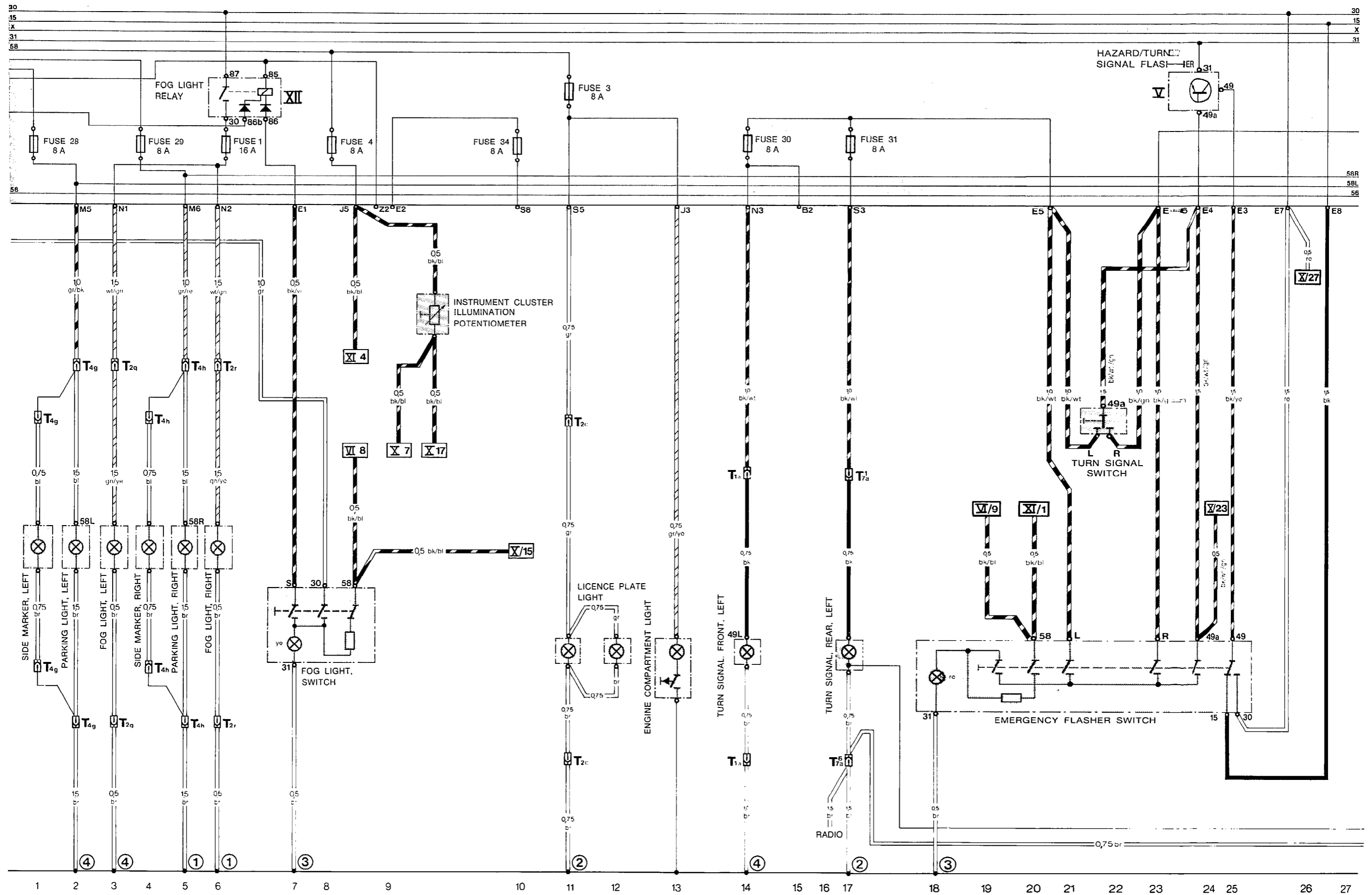
IGNITION/STARTER SWITCH, LIGHT SWITCH
HEADLIGHT, PARKING LIGHT



Current Flow Diagram Type 928 S USA Model 83 Part IV

FOG LIGHT, LICENSE PLATE LIGHT
FRONT TURN SIGNAL
HAZARD FLASHER

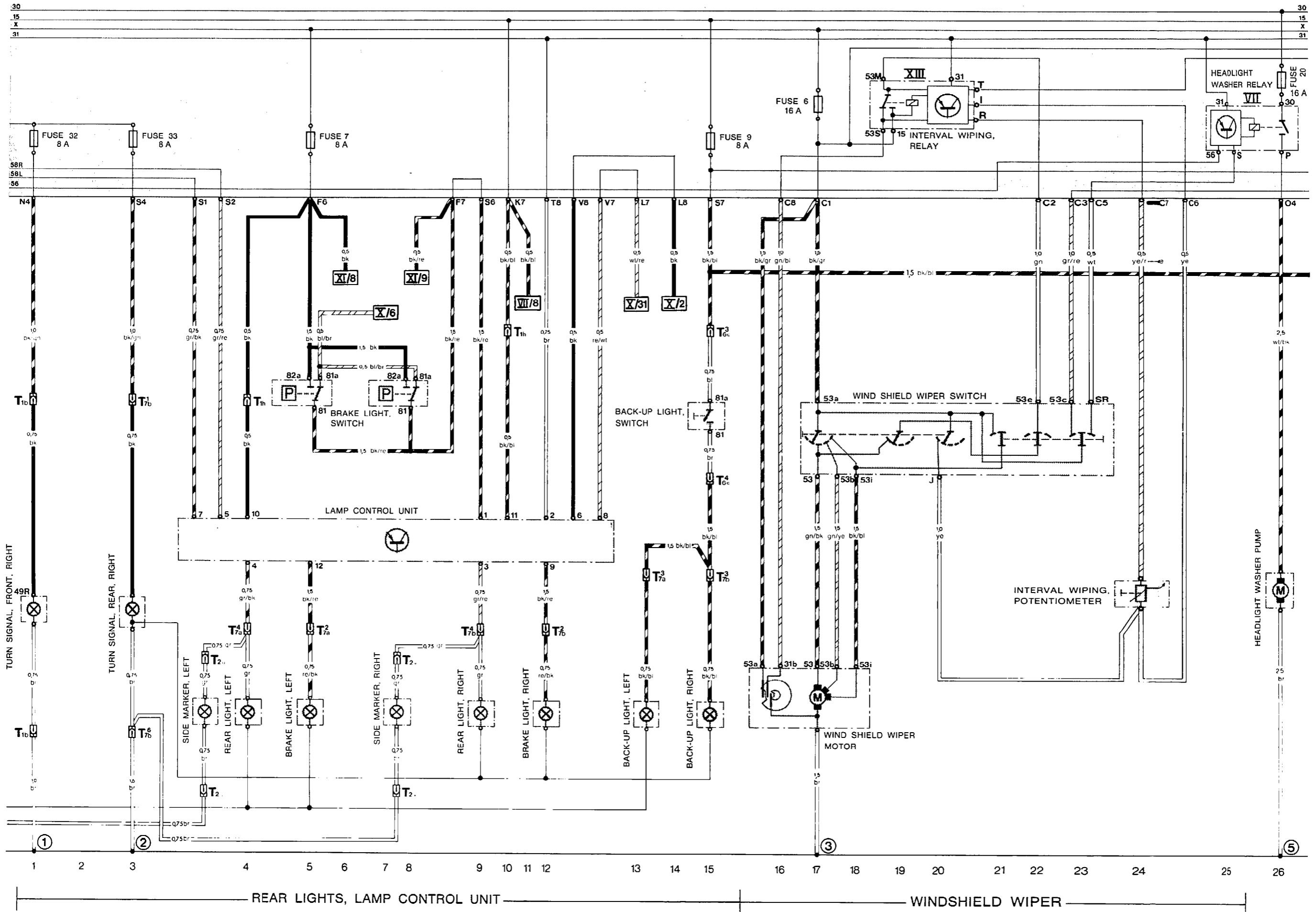
Current Flow Diagram Type 928 S USA Model 83 Part IV



HEADLIGHT, PARKING LIGHT, FOG LIGHT, LICENSE PLATE LIGHT | FRONT TURN SIGNAL | HAZARD FLASHER

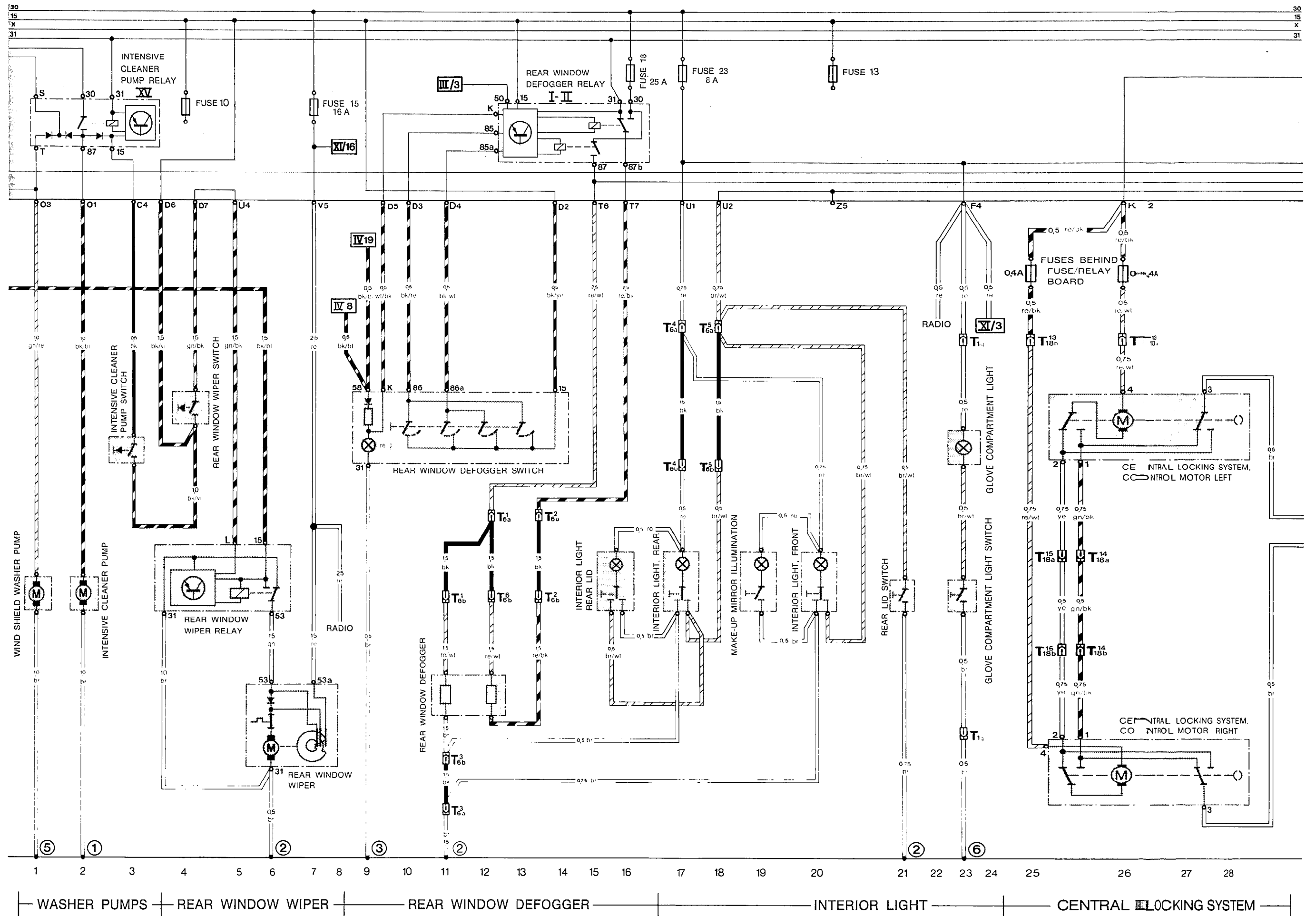
Current Flow Diagram Type 928 S USA Model 83 Part V

REAR LIGHTS, LAMP CONTROL UNIT
WINDSHIELD WIPER



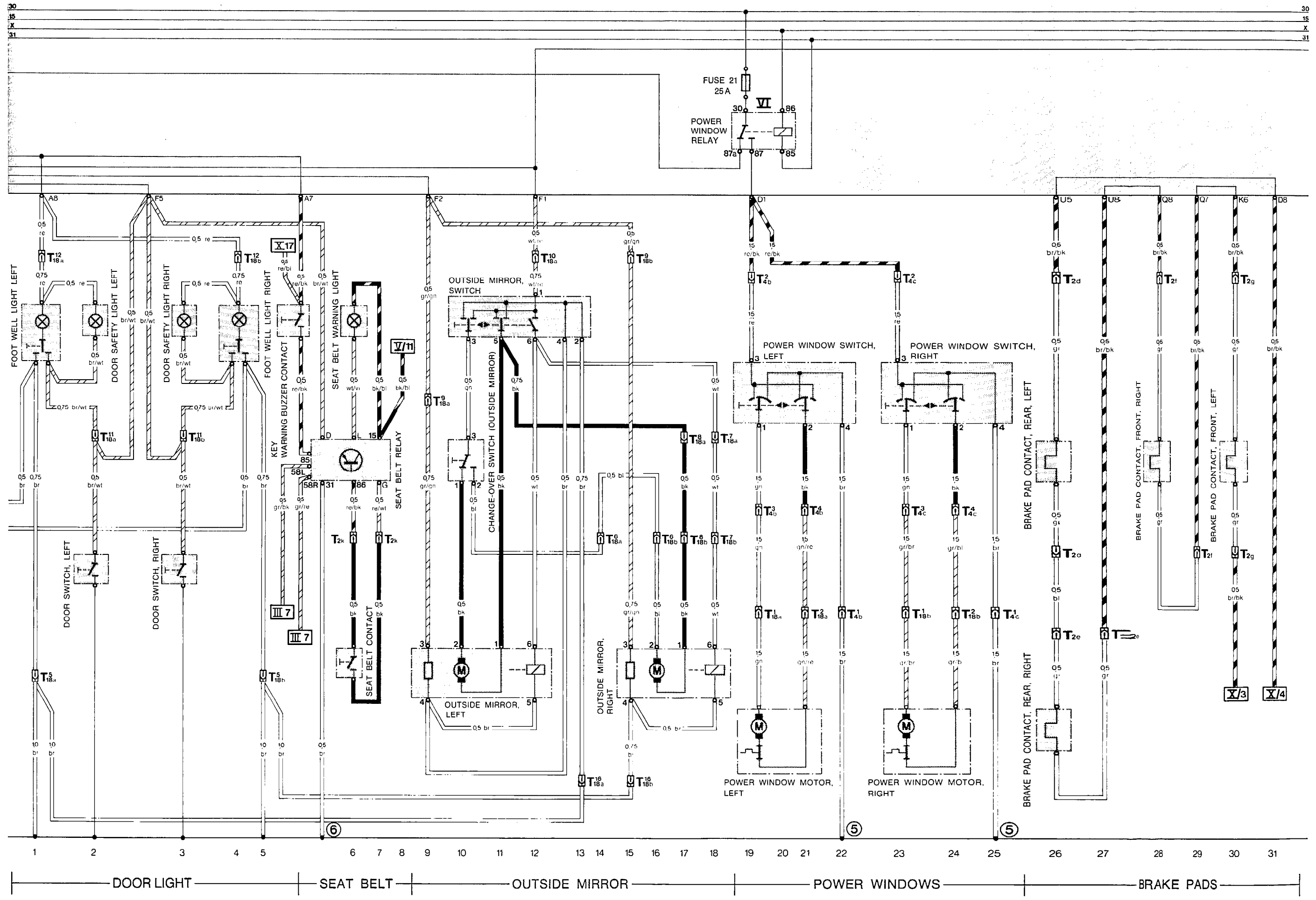
Current Flow Diagram Type 928 S USA Model 83 Part VI

WASHER PUMPS
REAR WINDOW WIPER
REAR WINDOW DEFOGGER
INTERIOR LIGHT
CENTRAL LOCKING SYSTEM



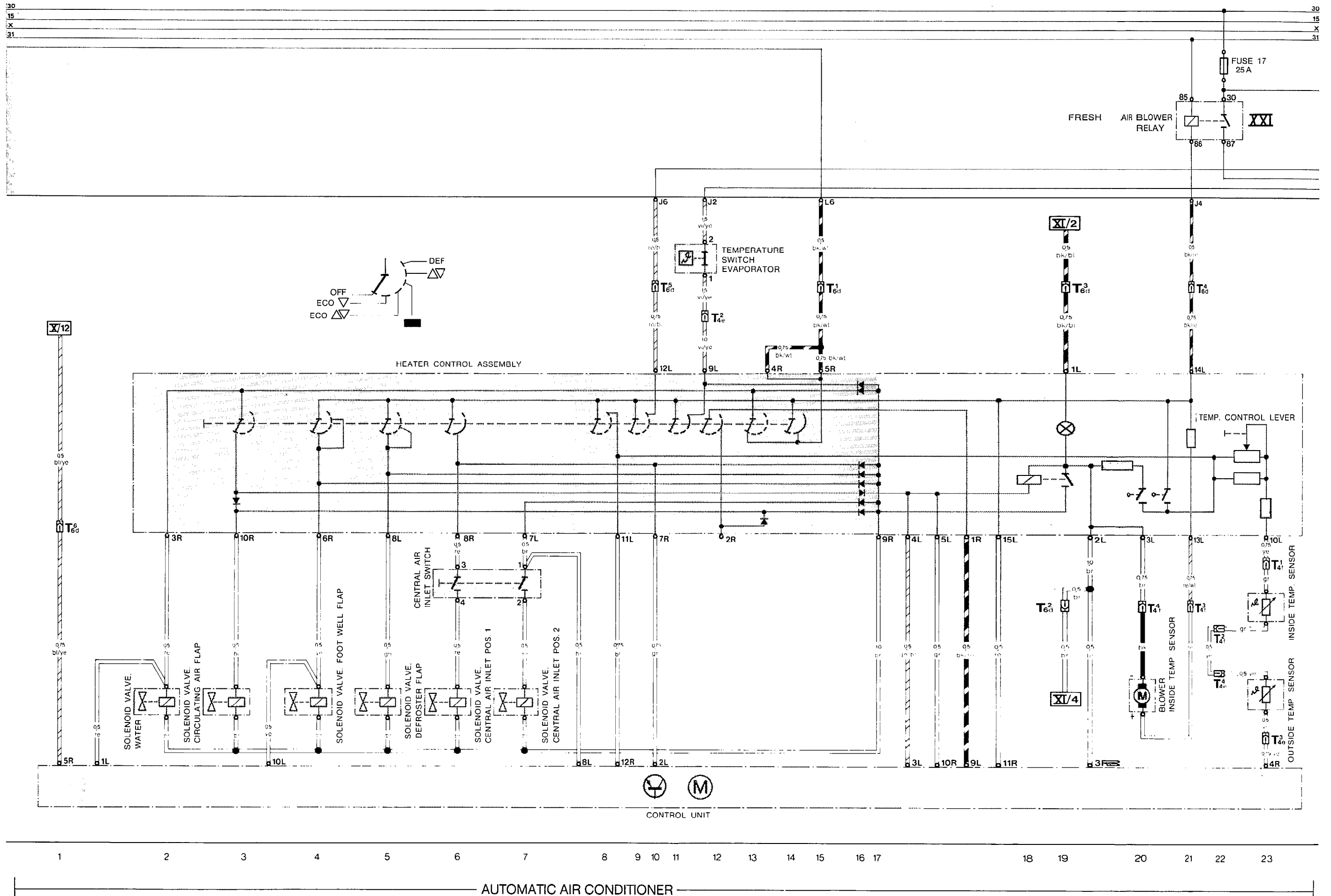
Current Flow Diagram Type 928 S USA Model 83 Part VI

DOOR LIGHT
SEAT BELT
OUTSIDE MIRROR
POWER WINDOWS
BRAKE PADS



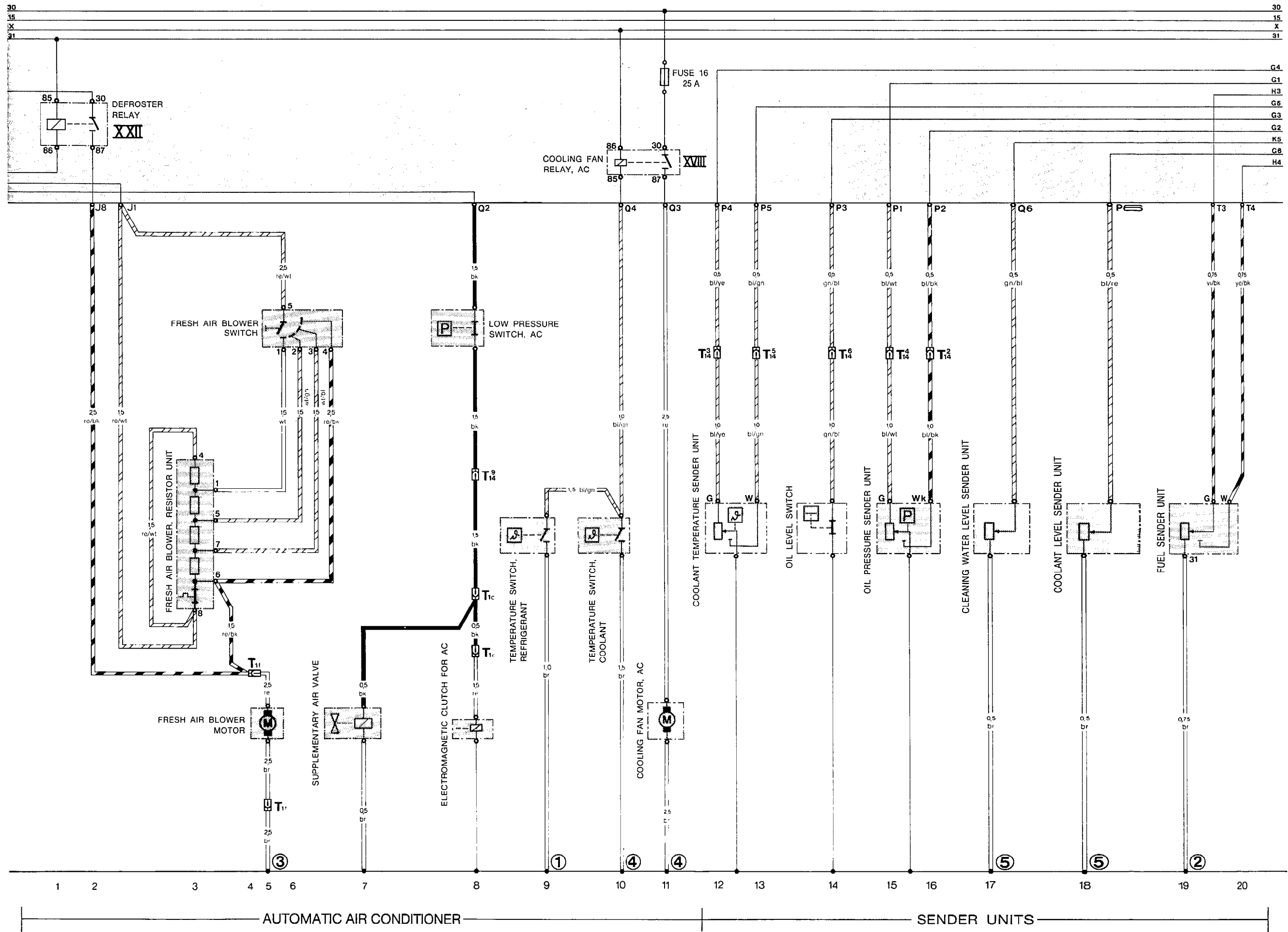
Current Flow Diagram Type 928 S USA Model 83 Part VIII

AUTOMATIC AIR CONDITIONER



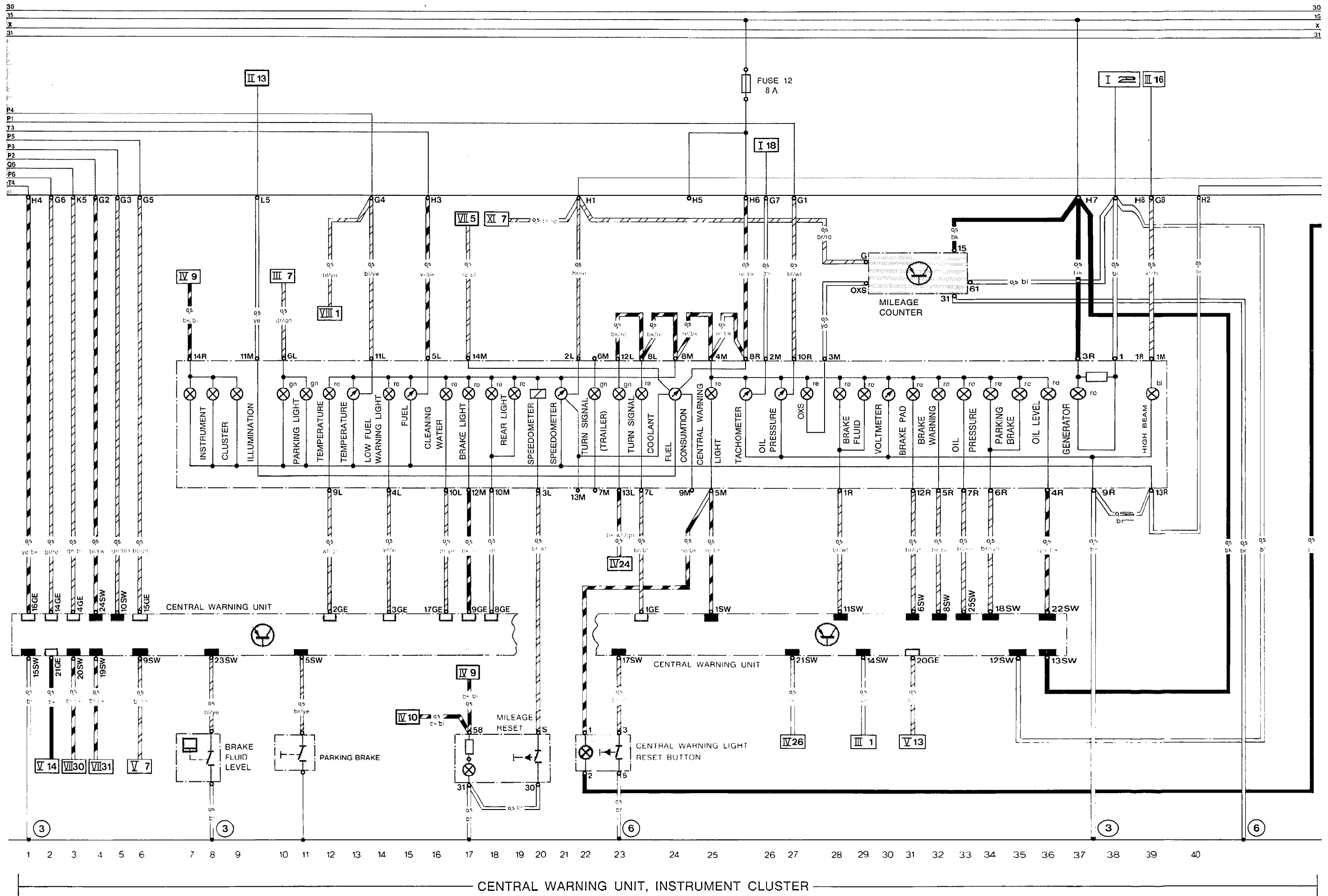
Current Flow Diagram Type 928 S USA Model 83 Part IX

AUTOMATIC AIR CONDITIONER
SENDER UNITS



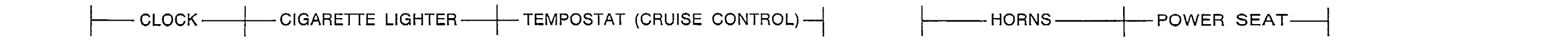
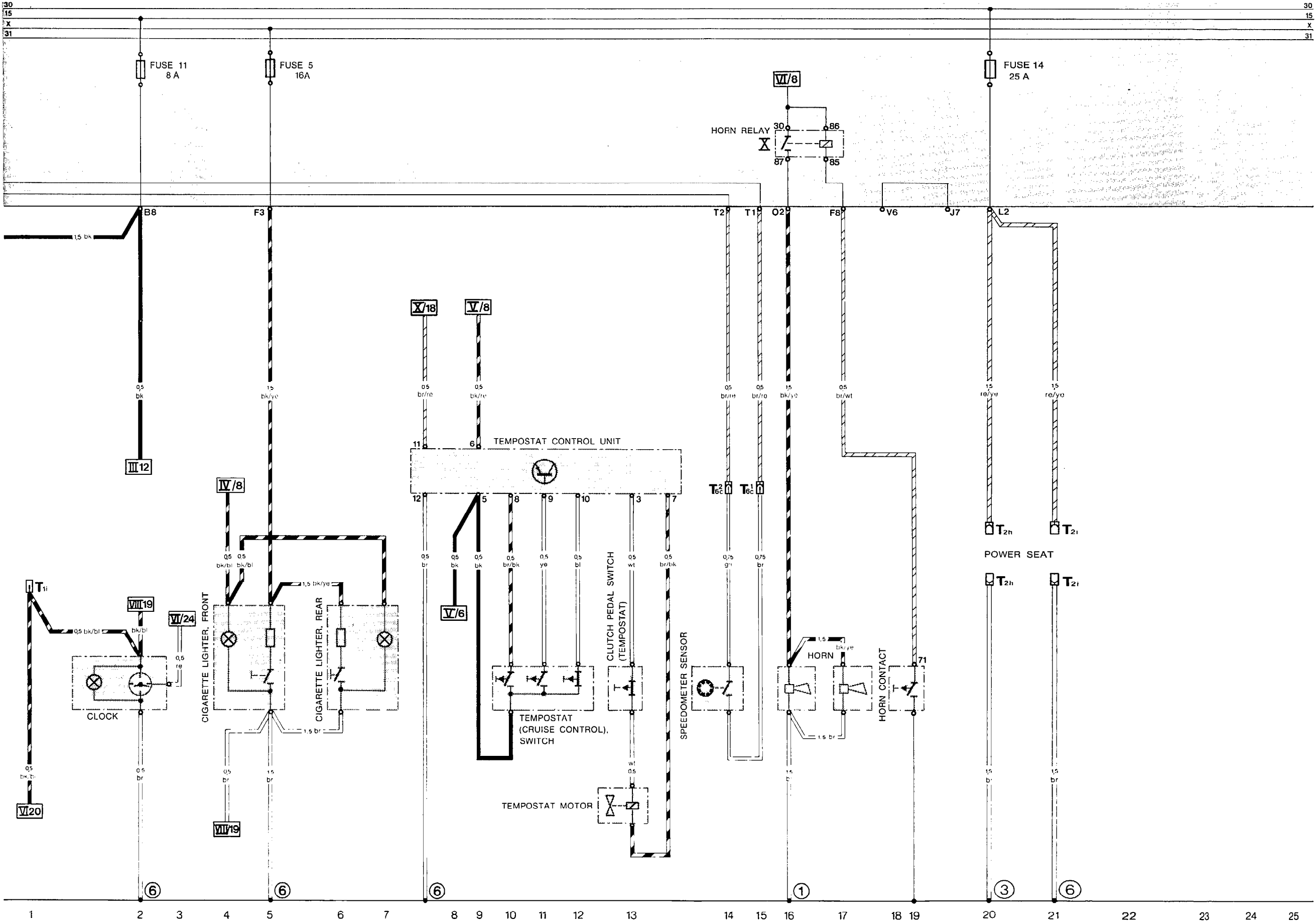
Current Flow Diagram Type 928 S USA Model 83 Part X

CENTRAL WARNING UNIT, INSTRUMENT CLUSTER



Current Flow Diagram Type 928 S USA Model 83 Part XI

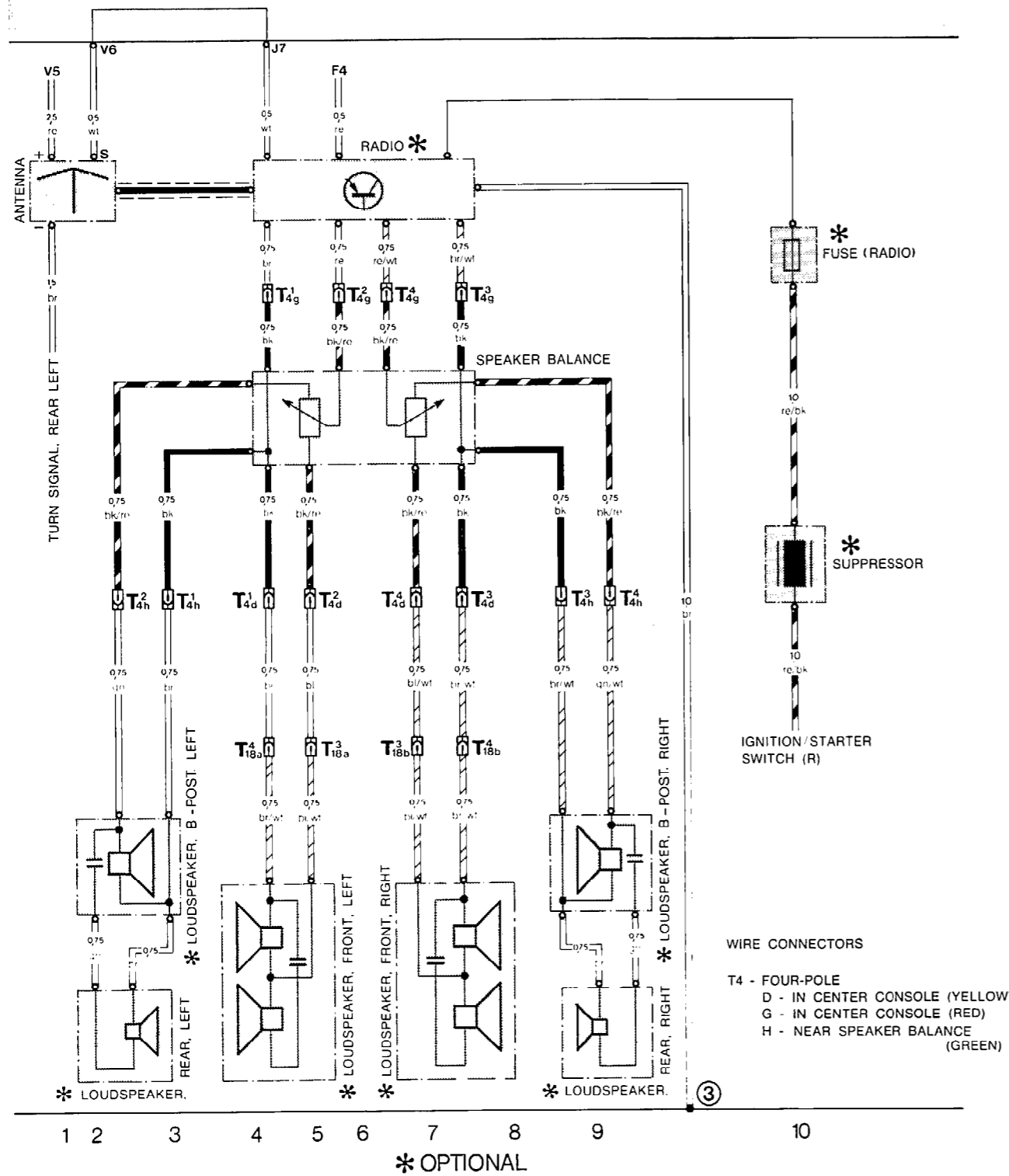
CLOCK
CIGARETTE LIGHTER
TEMPOSTAT (CRUISE CONTROL)
HORNS
POWER SEAT



Additional Current Flow Diagram 97

Type 928 S USA Model 83 RADIO WITH 8 LOUDSPEAKERS (HIFI) Wiring

30	30
15	15
X	X
31	31



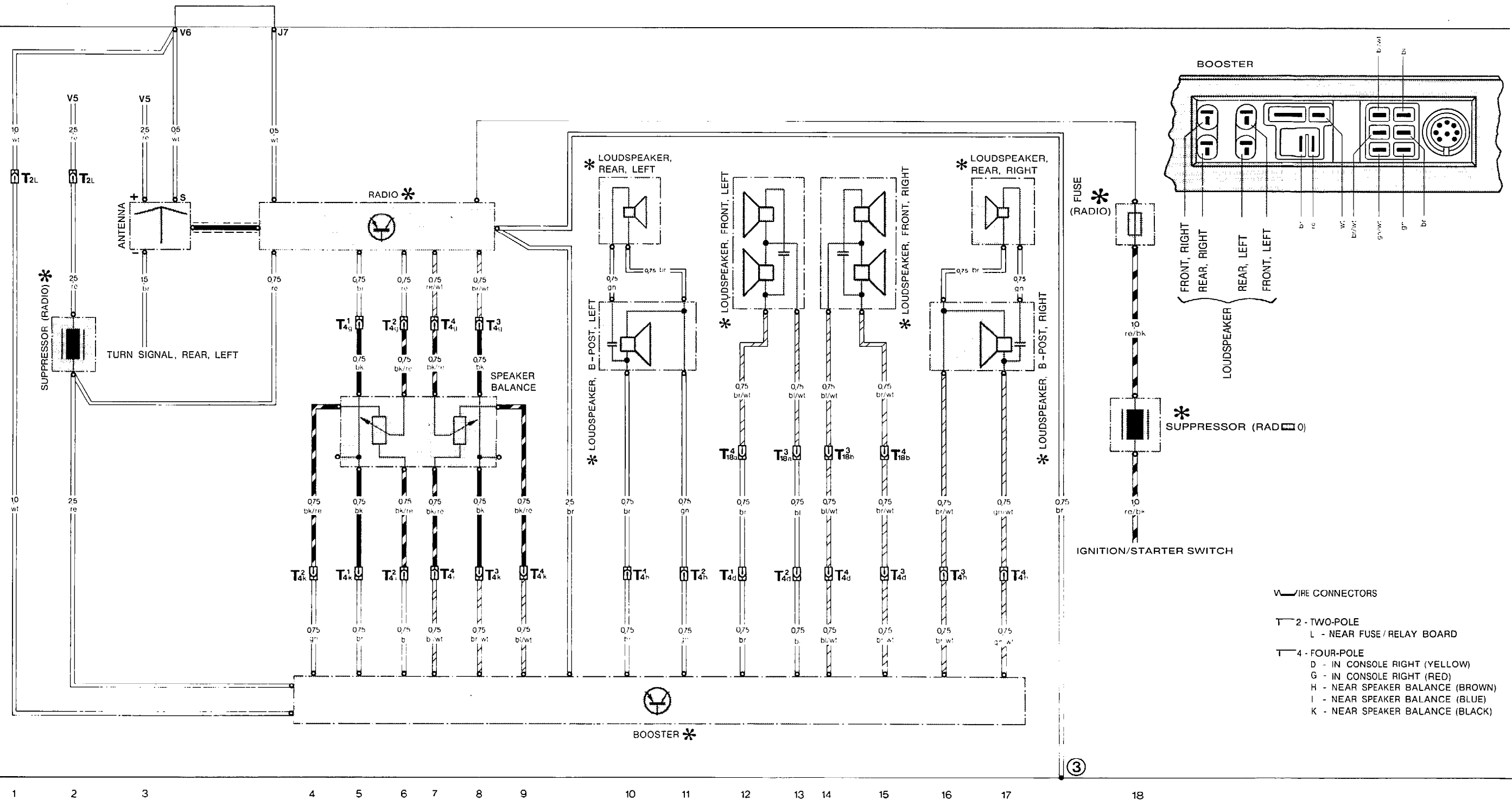
Additional Current Flow Diagram Type 928 S USA Model 83

**RADIO WITH 8 LOUDSPEAKERS
AND BOOSTER (HIFI)**

Additional Current Flow Diagram Type 928 S USA Model 83

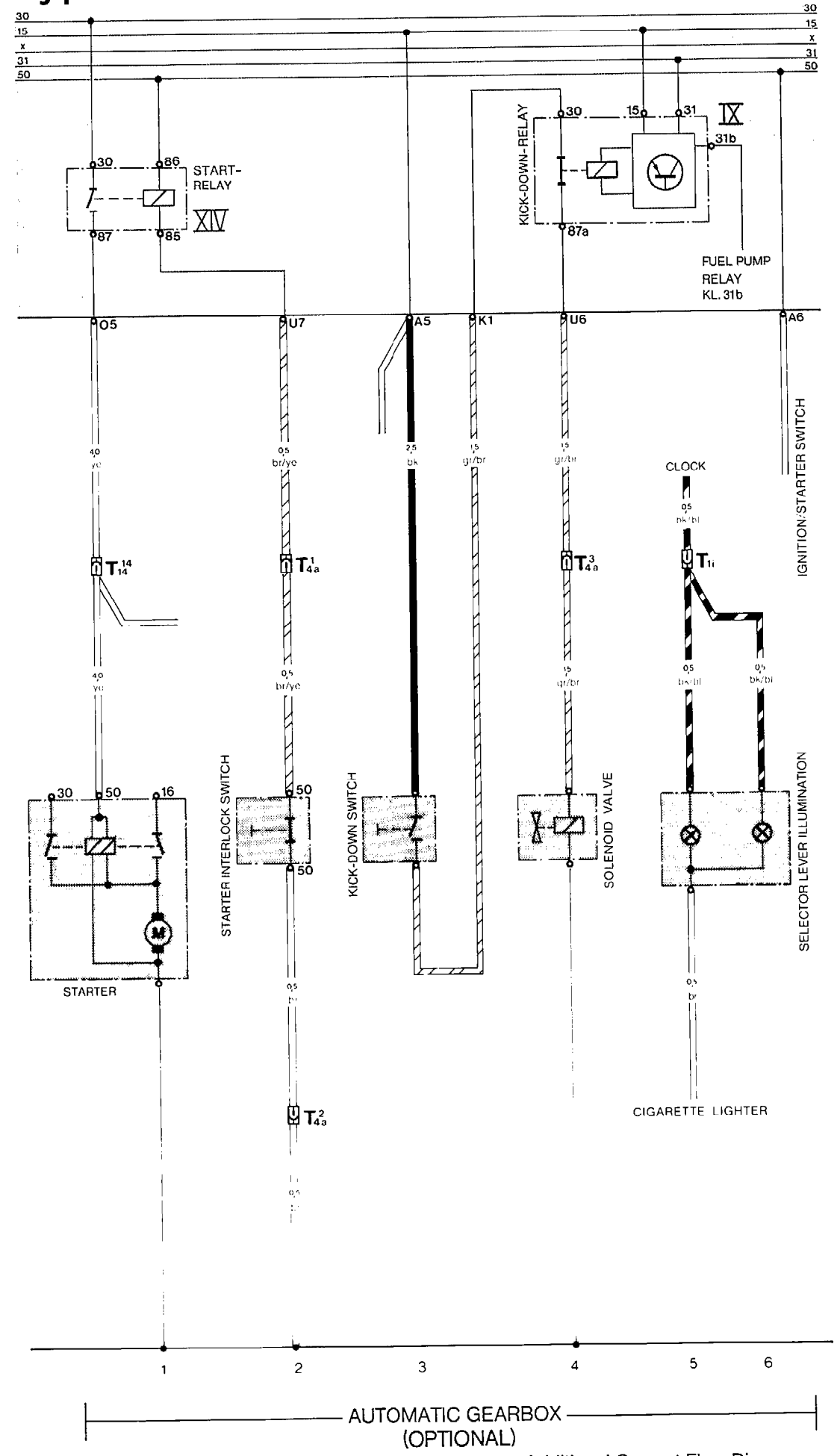
RADIO WITH 8 LOUDSPEAKERS AND BOOSTER (HIFI)

30	30
15	15
X	X
31	31



* OPTIONAL

Additional Current Flow Diagram Type 928S USA Model 83 Automatic gearbox



Additional Current Flow Diagram

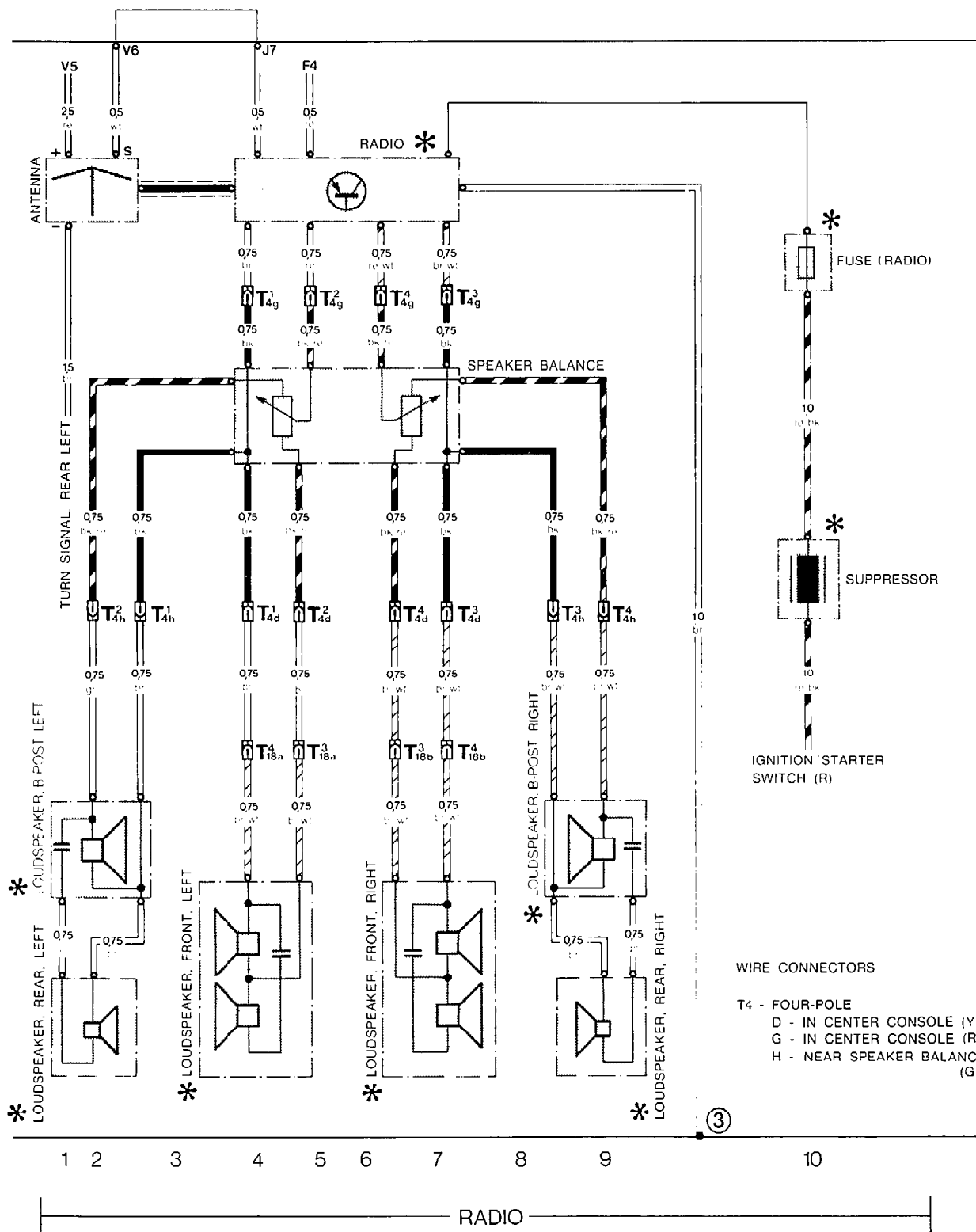
Type 928 S Model 83

(HIFI) RADIO WITH 8 LOUDSPEAKERS

97

Wiring

30	30
15	15
X	X
31	31



Additional Current Flow Diagram Type 928 S Model 83

**RADIO WITH 8 LOUDSPEAKERS
AND BOOSTER (HIFI)**

RADIO WITH 8 LOUDSPEAKERS AND BOOSTER (HIFI)

30	30
15	15
X	X
31	31

